



# SYNERGY SURVEYS

*Surveying For a Smarter World.*

## CAPABILITY STATEMENT 2024



[www.synergysurveys.com.au](http://www.synergysurveys.com.au)

## ▶ WHO WE ARE

Synergy Surveys is a dynamic engineering surveying firm based in Western Australia, renowned for blending advanced technology with traditional surveying methods to provide tailor-made solutions. Our services span across vital industries including construction, mining, and infrastructure development. Our philosophy, embodied by our name "Synergy," is to provide holistic surveying services and work in complete harmony with our clients to ensure every project benefits from our collaborative approach, achieving outstanding results.

## OUR VALUES



### INNOVATION

At Synergy Surveys, we are committed to maintaining a leading edge in the surveying industry. We continuously adopt and refine the latest technologies and methodologies, ensuring that our solutions are not only current but also future-ready, setting new standards in surveying precision and service.



### ACCURACY

We are dedicated to providing our clients with exceptionally precise data and insightful analysis. Our rigorous attention to detail guarantees that our clients can rely on our results for making informed decisions that are crucial to the success of their projects.



### COLLABORATION

We believe in forming deep, synergistic partnerships with our clients. By fully integrating into their project objectives, we ensure that every surveying task is aligned with their strategic goals, driving projects to successful completion through cooperative planning and execution.



### INTEGRITY

Integrity is fundamental to everything we do at Synergy Surveys. We conduct our business with the utmost honesty and transparency, adhering to the highest ethical standards to ensure that our engagements are always conducted with fairness and respect for all stakeholders.



### RELIABILITY

Trust is the cornerstone of our client relationships. We earn this through consistent performance and an unwavering commitment to meeting our clients' needs. Our steadfast dedication ensures that we are a reliable partner in every project, delivering on our promises time and again.



### SAFETY

Safety is paramount in all our operations. We adhere to rigorous safety protocols and continuously update our practices to meet the highest industry standards. By prioritizing the health and safety of our team and all project personnel, we contribute to safer project environments and foster a culture of safety that extends to every aspect of our work.

## ▶ OUR SERVICES

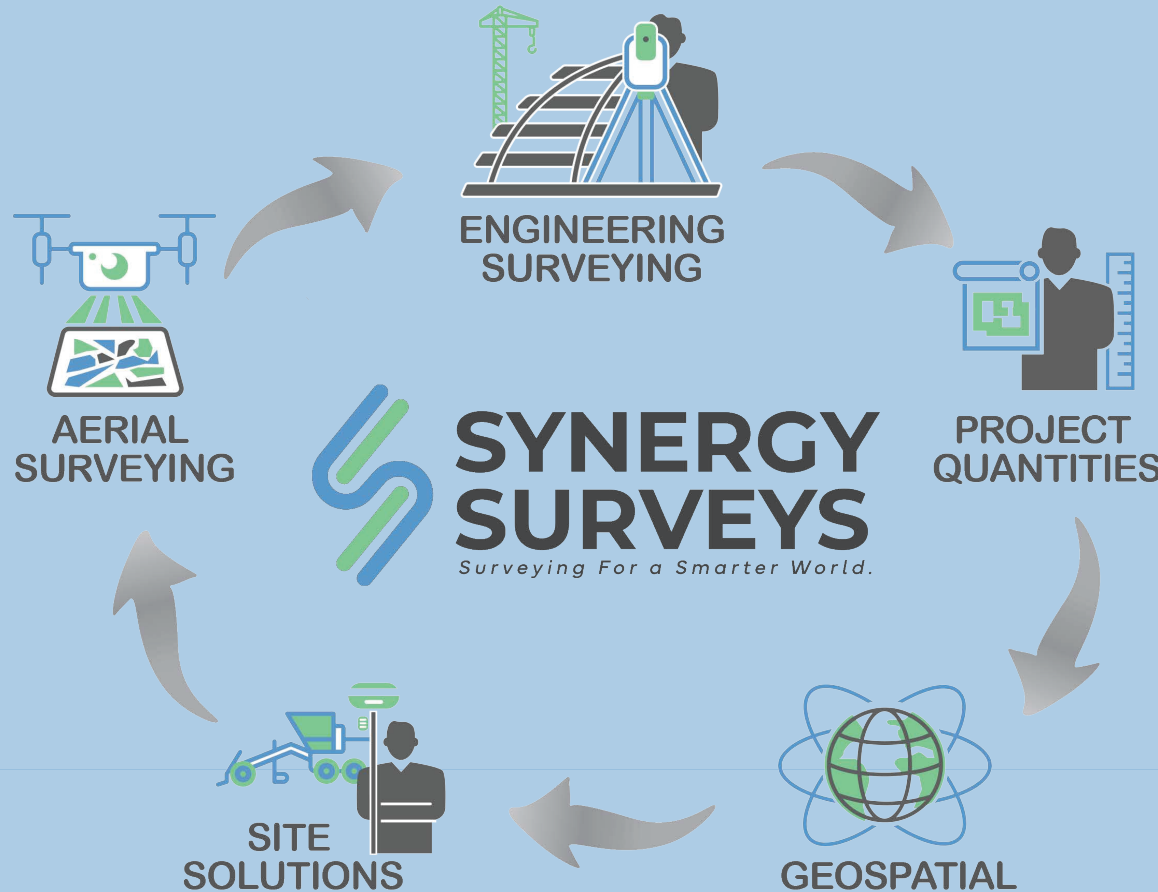
Synergy Surveys stands out as a one-stop solution for all surveying needs. Our holistic approach means we handle all aspects of surveying, allowing our clients to focus on other critical areas of their projects with the confidence that the surveying component is in expert hands. From the initial ground-breaking to final project wrap-up and beyond, we are there to provide continuous support, making us the ideal partner for projects that require meticulous attention to detail and a comprehensive service scope.

### OUR VISION

To be renowned for our efficiency, adaptability and highest quality of work, while making a positive impact on projects, communities and the environment.

### OUR MISSION

Our mission is to set the benchmark for surveying excellence, transforming challenges into opportunities through innovative solutions and expert insights. We commit to enhancing project efficiency, accuracy, and safety by harnessing the power of advanced surveying technologies.



#### EQUIPMENT

- ▶ Leica Robotics
- ▶ Leica Optics
- ▶ Carlson GNSS
- ▶ Topcon GNSS
- ▶ DJI M350 UAV
- ▶ DJI P4 RTK UAV

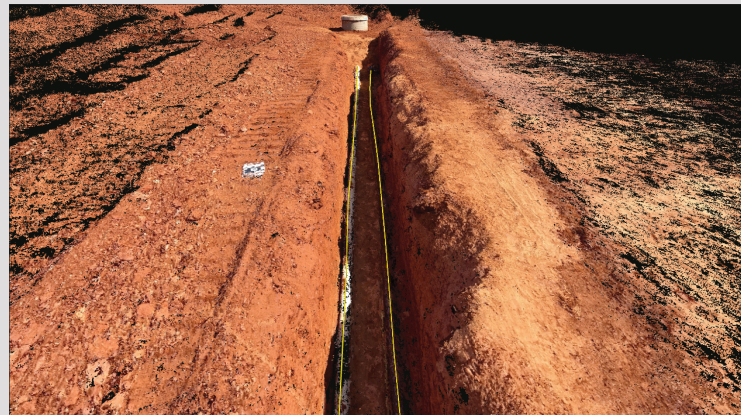
#### OFFICE SOFTWARE

- ▶ AutoCad Civil3d
- ▶ AutoCad Revit
- ▶ GeoComp Terramodel
- ▶ Pix4d Matic
- ▶ Virtual Surveyor
- ▶ 12d Office

#### FIELD SOFTWARE

- ▶ Carlson SurvPC
- ▶ Leica Captivate
- ▶ Leica Smartworks
- ▶ Pix4d Catch
- ▶ Topcon Magnet





## ENGINEERING AND CONSTRUCTION SURVEYING

*At Synergy Surveys, we pride ourselves on being more than just a surveying firm. Our team comprises seasoned construction experts, each equipped with a wealth of industry knowledge that extends far beyond traditional surveying. This deep expertise allows us to not only collect critical data but also provide insightful, actionable advice that can significantly influence the success of your project.*

### Pioneering Surveying Excellence with Advanced Technologies

When clients partner with Synergy Surveys, they gain access to state-of-the-art instruments and software that guarantee accuracy and precision from project inception through to completion. Our use of cutting-edge technology and highly mobile measuring systems is tailored to meet the unique demands of each project, ensuring seamless execution and optimal outcomes.

### Engineering Surveying Services: Harnessing Technology for Precision and Safety

Our engineering surveying services are critical to the design and construction of new projects, ensuring each phase is built on a foundation of precise, reliable and effective data. We provide a comprehensive suite of services that incorporate the latest in surveying technology.

- ▶ ROAD AND HIGHWAY
- ▶ CONCRETE STRUCTURES
- ▶ BULK EARTHWORKS
- ▶ DETAILED EARTHWORKS
- ▶ DRAINAGE
- ▶ HEAVY AND LIGHT RAIL
- ▶ STRUCTURAL MECHANICAL PIPING
- ▶ PROCESSING PLANTS
- ▶ SOLAR FARMS
- ▶ UNDERGROUND SERVICES

▶ **Advanced Topographic Surveys:** Utilizing high-definition Lidar, UAV Photogrammetry and traditional methods, we survey existing site conditions, including landscapes, buildings and infrastructures as well as underground services providing a detailed understanding of the project environment

▶ **Precision Set-Out Services:** We employ GPS and robotic total station technologies to accurately set out bulk and detailed earthworks, limits, structures, underground services, concrete and hold down bolts, this precision ensures that every element of the construction is in line with its planned specifications.

▶ **Survey Mark Establishment:** We set out Survey marks adhering to The Intergovernmental Committee on Surveying and Mapping Special publication 1, that serve as reliable guides for the construction of new structures or linear developments, ensuring every phase of the build is executed to exact standards.

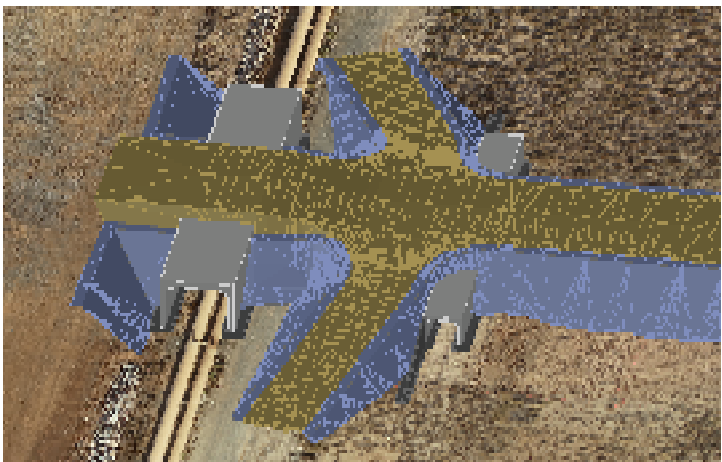
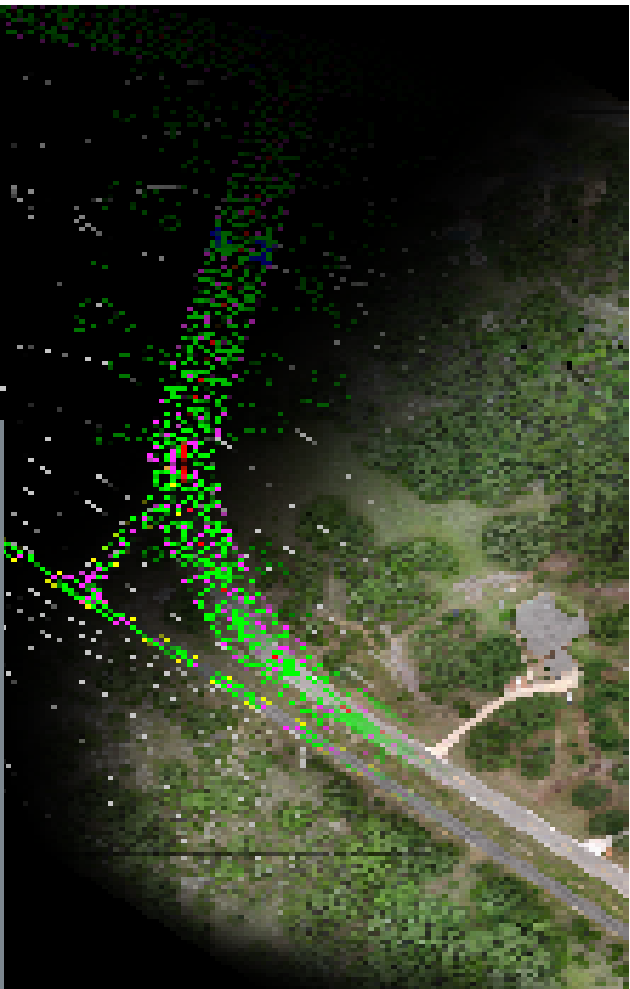
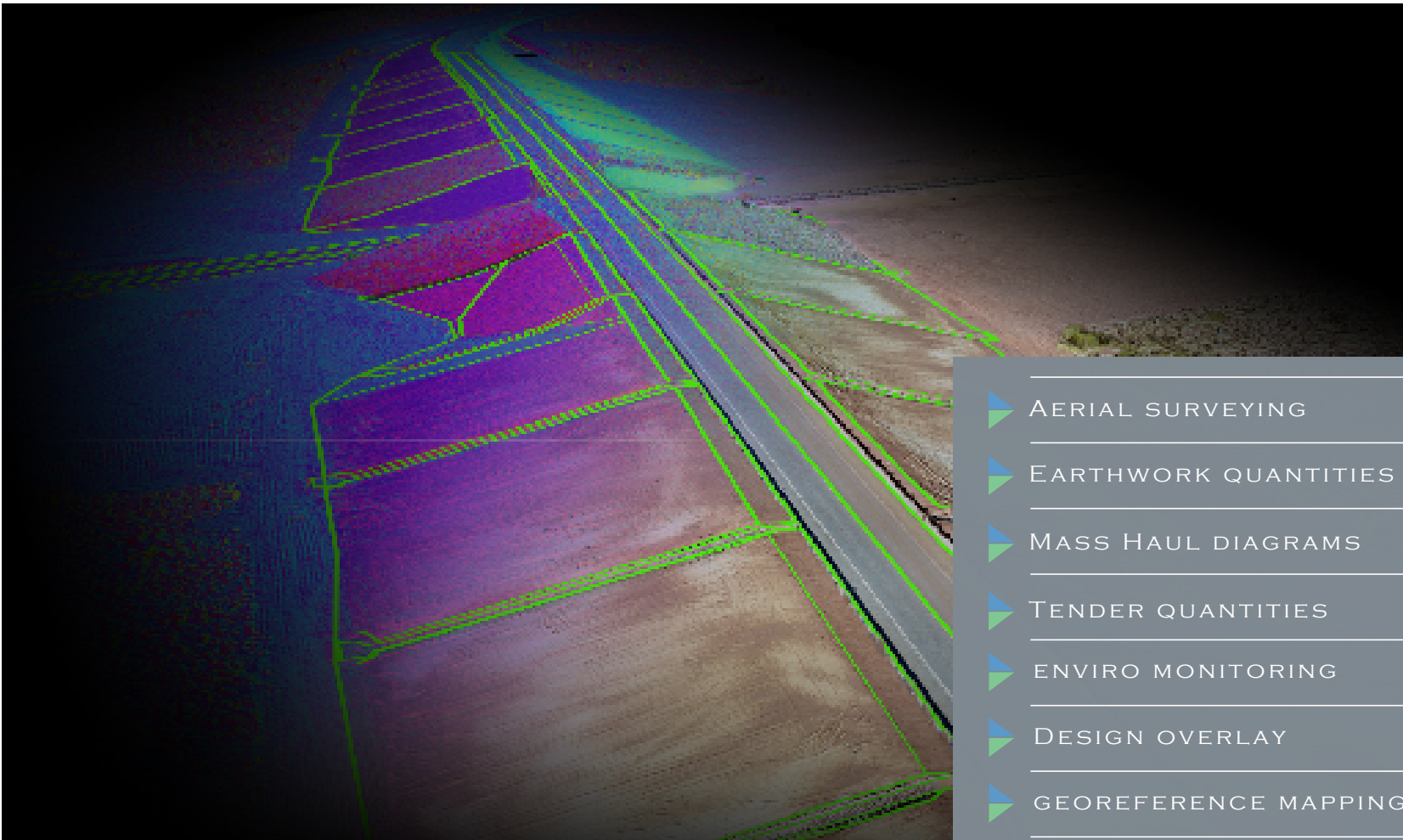
▶ **Real-Time Location Verification:** During construction, we continuously verify the location of existing structures, utilizing real-time tracking technology to monitor and adjust as necessary, safeguarding against potential interaction and discrepancies.

▶ **Photogrammetry Documentation:** Utilizing advanced software, processing and a GNSS rover, Synergy Surveys delivers precise, photo-realistic 3D models for trench documentation, enhancing as-built accuracy, documentation and project oversight..

▶ **Augmented Reality for Design Visualization:** Implementing AR technology to project design plans over physical spaces and viewing photo-realistic as built of underground services, enhancing understanding and allowing for real-time adjustments.

▶ **As-Built Surveys for Compliance:** Post-construction, we conduct as-built surveys using advanced surveying instruments efficiently. Producing digital models and red-lined drawings to ensure every element conforms to regulatory and design compliance, providing a reliable record for future reference..





- ▶ AERIAL SURVEYING
- ▶ EARTHWORK QUANTITIES
- ▶ MASS HAUL DIAGRAMS
- ▶ TENDER QUANTITIES
- ▶ ENVIRO MONITORING
- ▶ DESIGN OVERLAY
- ▶ GEOREFERENCE MAPPING
- ▶ FLOOD MAPPING
- ▶ LAND VISUALIZATION

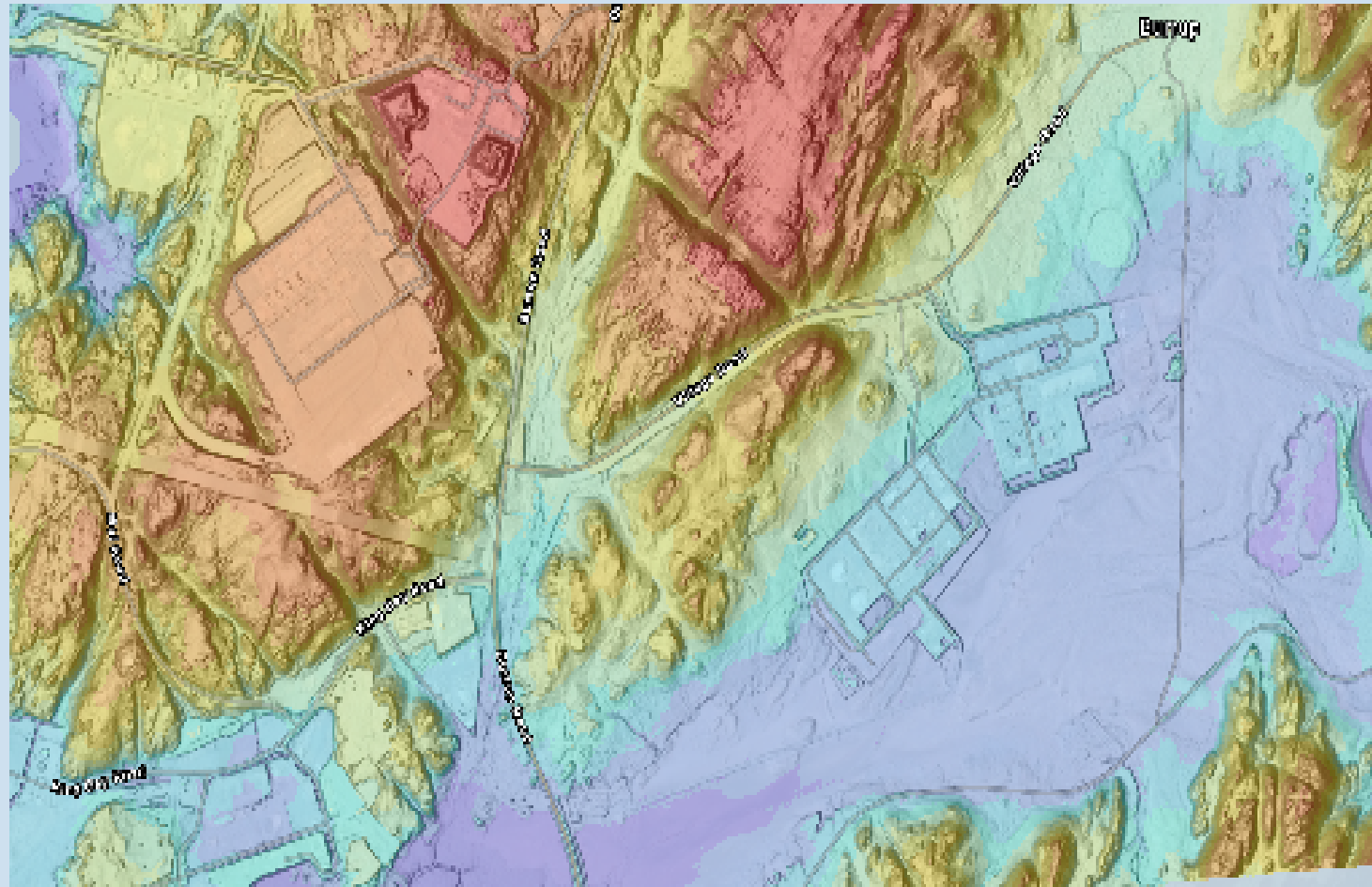
## ▶ PROJECT QUANTITIES

- ▶ **Accurate Quantity Assessments:** At Synergy Surveys, we specialize in providing precise measurements crucial for effective project management. Our services ensure accurate budgeting, resource allocation, and efficient project execution.
- ▶ **Tender Support:** We assist clients with detailed material and component quantity calculations for tender preparation, helping ensure accurate and competitive bids that enhance their chances of winning contracts.
- ▶ **Claims Verification:** Our services include verifying claims related to project quantities, providing reliable data that supports accurate financial claims and aids in dispute resolution.
- ▶ **Cost Management:** We conduct thorough cost analyses based on project quantities, identifying opportunities for savings and helping clients manage their budgets effectively.
- ▶ **Integration with Planning:** Our quantity data integrates seamlessly into project planning and scheduling tools, ensuring projects are completed on time and within budget.
- ▶ **Detailed Reporting:** We provide comprehensive reports that offer insights into every aspect of project quantities, supporting informed decision-making throughout the project life-cycle.
- ▶ **Precision and Efficiency:** We are committed to precision and efficiency in all our services, ensuring our project quantity assessments contribute to the overall success of your projects.

## ▶ AERIAL SURVEYING AND MAPPING

- ▶ **Advanced Aerial Data Acquisition:** Utilizing UAV photogrammetry and high-definition LiDAR, we capture extensive aerial data across diverse terrains, providing essential information for project planning and environmental assessments.
- ▶ **Precision Mapping:** Our state-of-the-art GPS technology produces accurate maps and 3D models, enhancing decision-making and ensuring developments are based on precise and current data.
- ▶ **Environmental Monitoring:** Our Aerial surveys enable us to monitor the impact of projects on ecosystems, offering insights to mitigate environmental risks during construction.
- ▶ **Infrastructure Inspection:** Using UAVs, we perform aerial inspections of infrastructure like bridges and roads, offering a safe and efficient way to assess and plan maintenance.
- ▶ **Volume Calculations and Change Detection:** We provide exact material volume calculations for earthmoving and stockpile monitoring, and detect changes to keep projects on track.
- ▶ **Regulatory Compliance and Documentation:** Post-project, our aerial surveys support comprehensive documentation that meets regulatory standards, ensuring all phases are compliant and well-documented.
- ▶ **Commitment to Safety and Quality:** Adhering to strict safety protocols, our certified operators ensure all operations are safe while maintaining the highest data quality standards.





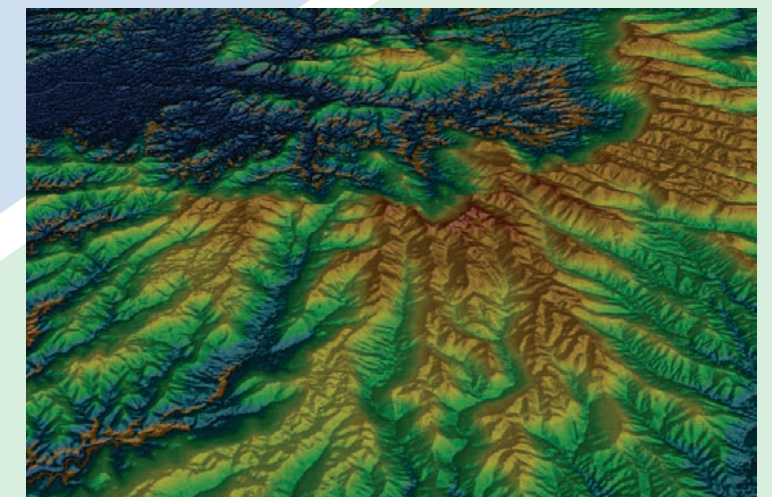
## ► SITE SOLUTION AND EQUIPMENT HIRE

- **Specialized Equipment Hire:** We offer tailored surveying equipment for construction supervisors, including advanced supervisor car kits, ensuring on-site efficiency and effective project management.
- **Training and Support:** Our comprehensive training sessions ensure that all personnel are proficient in using the hired equipment, maximizing productivity and ensuring safety on site.
- **Base Station Hire for Machine Control:** We provide base stations for hire, essential for machine control across extensive construction sites, ensuring precise earthworks and adherence to project specifications.
- **Remote Support Services:** Our remote support is available to promptly address any operational issues, providing troubleshooting and expert advice to keep your project on track without the need for on-site visits.
- **Integrated Site Solutions:** Our equipment hire is designed to integrate seamlessly with your project operations, enhancing overall site productivity and data integration.

## ► GEOSPATIAL SOLUTIONS

- **Augmented Reality and Design Visualization:** Synergy Surveys employs AR technology combined with GNSS precision and specialized equipment to overlay design plans onto physical spaces, enabling the real-time viewing of 3D photo-realistic buried services through your phone. This innovative approach enhances field visualization, improves understanding, and facilitates immediate adjustments on-site.
- **Integrated Geospatial Analysis:** We combine our other services like Surveying, Aerial survey and Project Quantities with advanced technologies to provide precise mapping, detailed spatial analysis, and effective data management, enhancing decision-making across project stages.
- **Mapping and Survey Integration:** Our high-resolution topographic maps created via UAV photogrammetry and LiDAR integrate seamlessly with our surveying services, ensuring accuracy in planning and execution.
- **GIS and Field Application:** Using ArcGIS Field Maps, we enable project supervisors and management to access and utilize geospatial data directly on-site, improving real-time decision-making and project coordination.
- **Environmental Impact Analysis:** Our use of geospatial data for environmental impact assessments helps ensure projects comply with sustainability standards and regulatory requirements.

- AUGMENTED REALITY
- SUPERVISOR CAR KIT
- GNSS ROVER HIRE
- BASE STATION HIRE
- CONTROL NETWORKS
- TRAINING AND SUPPORT
- ARC GIS FIELD MAPS
- FLOOD MAPPING
- LAND VISUALISATION



## RECENT PROJECTS

### Perdaman Ceres Urea Project - Dampier, Pilbara, WA, 2023-Current

In conjunction with Major Survey Player 'Survey Dynamics', managing the bulk earthworks package being undertaken by publicly listed DECML. The project see's tendering, monitoring and executing over 700k ton of drill and blast, over 2.5m ton of cut/fill earthworks and multiple concrete/drainage structures. Synergy Surveys Provided Survey management service's on site and revenue forecasting Data.



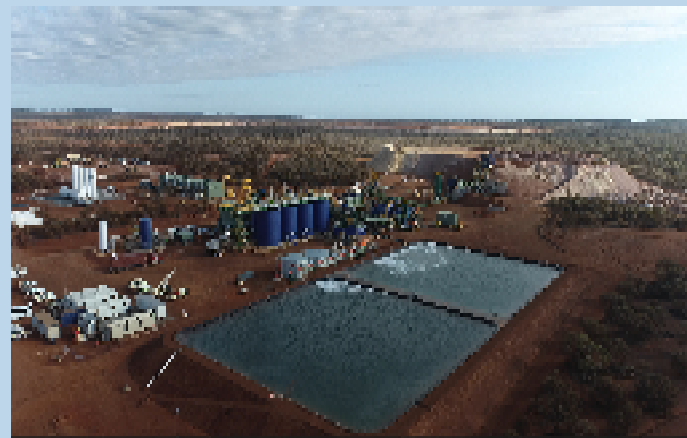
### FMG point Anderson TUL Upgrades - Port Hedland, Pilbara, WA, 2023

FMG completed an upgrade to their Train Unloader (TUL) at Anderson Point in Port Hedland in mid-2023. The project involved significant civil and concrete work, undertaken by Whittens, with Synergy Surveys providing precise surveying services to tie in new works with existing structures and conveyor's. The upgrade was to support the expansion of Iron Bridge Mine.



### Mt Ida Gold project - Mt Ida, Goldfield, WA, 2022-2023

Synergy Surveys played a pivotal role in the Aureene's Mt Ida Gold Project, providing expert surveying services for the construction of the camp, airport, tailings dam, and processing plant. Their precision and expertise were integral to delivering this major mining project efficiently and to the highest standards.



Proudly Based in Karratha - Servicing the Pilbara  
and Western Australia Sate Wide



## CONTACT

Scott Wilkings - Founder/Director

✉ [Scotty@synergysurveys.com.au](mailto:Scotty@synergysurveys.com.au)

☎ 0447 187 298

Shane Cloete - Pilbara Manager

✉ [Shane@synergysurveys.com.au](mailto:Shane@synergysurveys.com.au)

☎ 0447 187 298

Jason Heriot - Survey Supervisor

✉ [Jason@synergysurveys.com.au](mailto:Jason@synergysurveys.com.au)

☎ 0447 187 298